



**MHHS
PROGRAMME**
Industry-led, Elexon facilitated

Linked and Related MPANs

March 2023

MHHS-DEL1059

v1.0

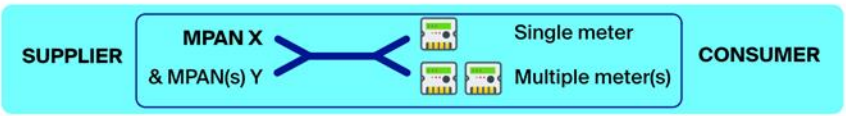
Deck Content

- Representation of the approach for Related MPANs, and scenarios for Linked MPANs
- Uses common visuals to highlight commonality and difference
- Migration Design variant commentary

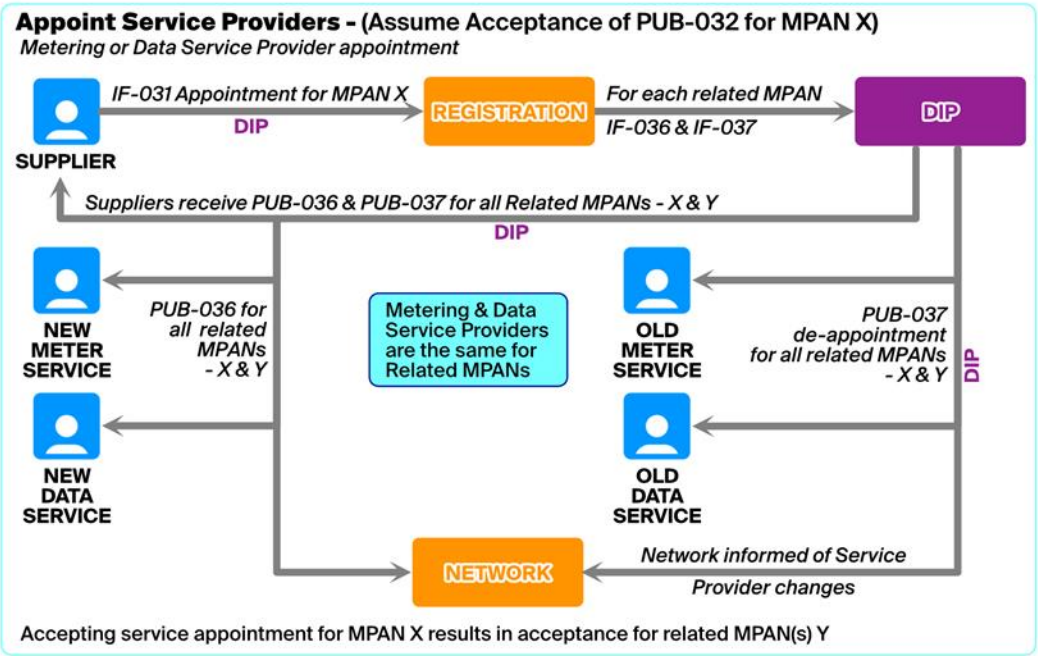
RELATED MPANs Generally used to support premises with dedicated heating circuits

MPAN X - Measures all other load  Meter capable of measuring multiple circuits

MPAN(s) Y - Measures heating load  Or, meters measuring individual circuits



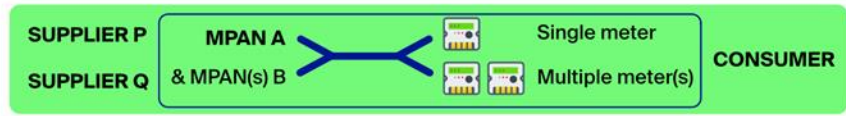
MPAN X is the Primary (Principle) MPAN - registration activity will automatically associate related MPAN(s) Y



LINKED MPANs Used to support premises generating electricity for export

MPAN(s) A - Import (consumption)  Meter capable of measuring import & export

MPAN(s) B - Export (generation)  Or, separate meters

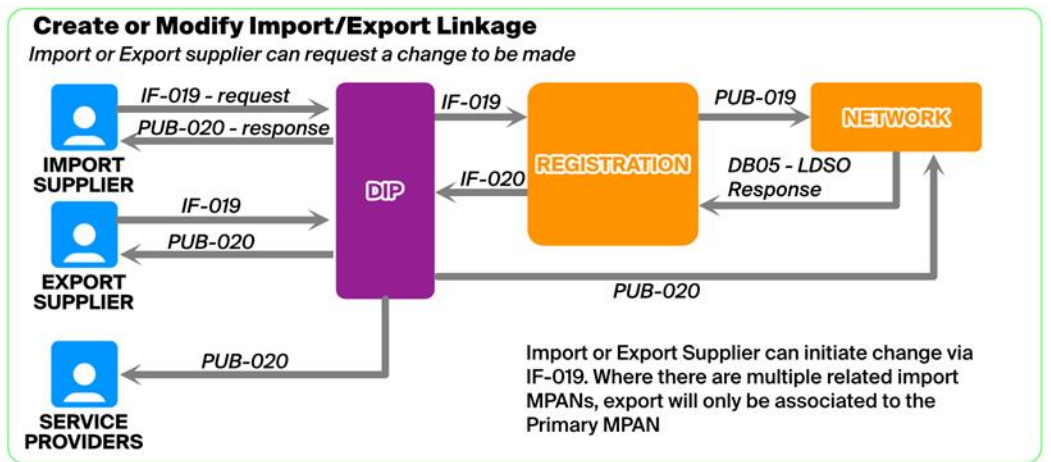


Linked MPAN Notes

Networks will maintain details of Linked MPANs in accordance with BSC rules and Supplier requests
 BSC Requirements relating to Linked MPANs (Associated Import/Export data item created by CP1558) will be implemented in June 2023

'Principle' and 'Subsidiary' are used interchangeably in the design alongside 'Primary' and 'Secondary' to acknowledge there may be multiple linked export and or import MPANs (i.e. more than 2)

MPAN A is the Primary (Principle) MPAN - registration activity will automatically associate linked MPAN(s) Y



Where multiple subsidiary MPANs are being specified, a failure for any MPAN in the request will result in the transaction failing. It may be more efficient to process subsidiary MPANs as individual transactions.



For all linked MPANs - the Metering Service and Data Service will be common, except for Data Service provider for Smart Meters, which can be different

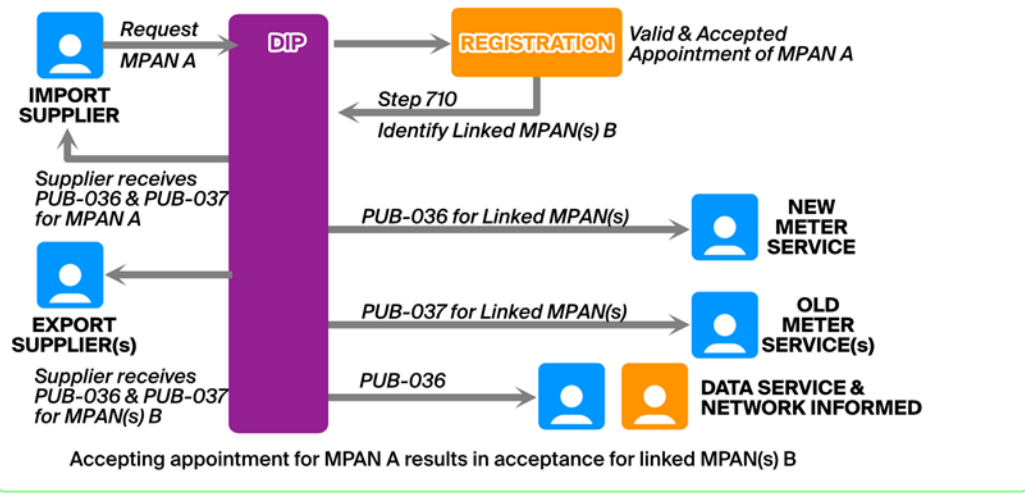
Appointments will only be accepted for Primary MPANs in a linked group - except Smart Data Service

LINKED MPANs Used to support premises generating electricity for export



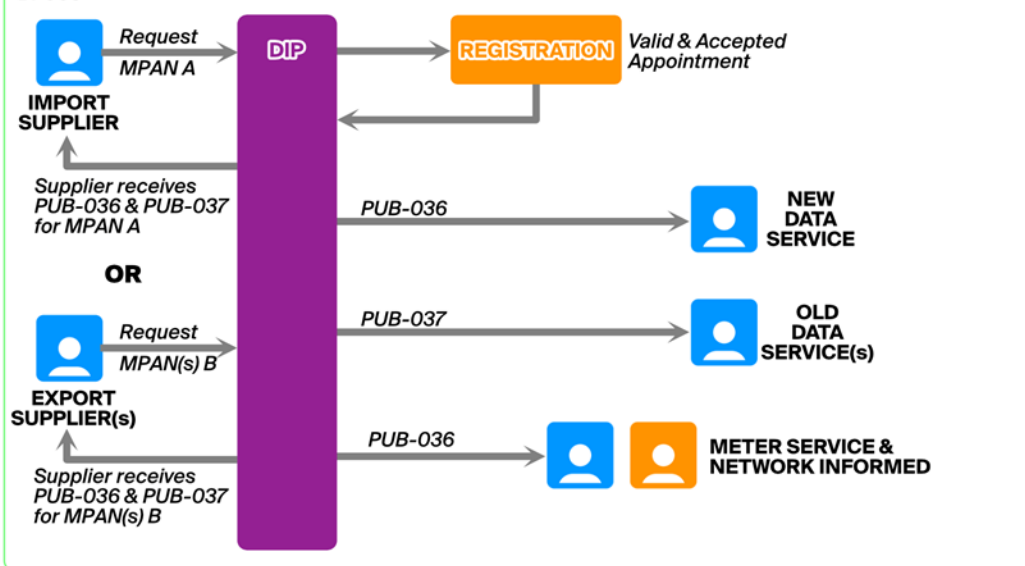
Linked MPANs - Appoint Metering Service Provider

BP002



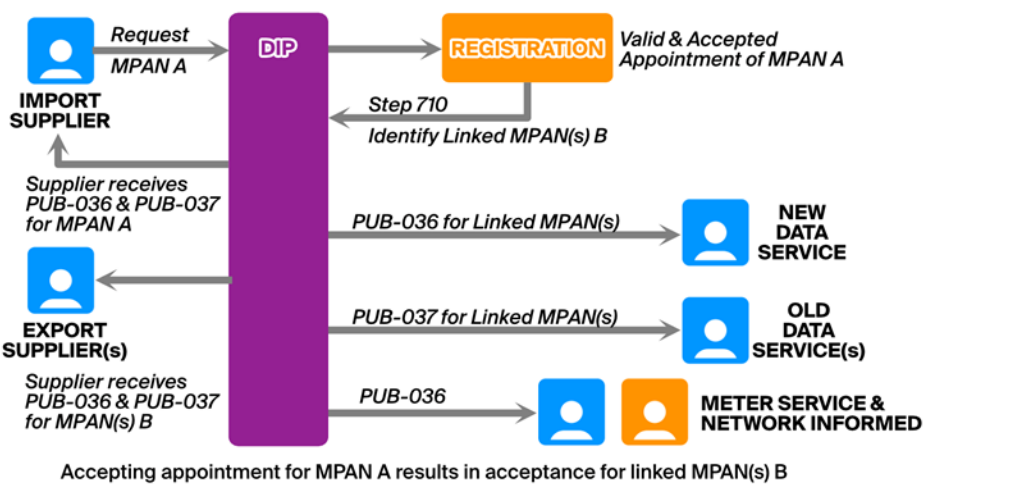
Linked MPANs - Appoint Data Service Provider (Smart Only)

BP003



Linked MPANs - Appoint Data Service Provider (Advanced/Non Smart)

BP003



FOR CONSIDERATION

Contractual implications for Metering Service (and Data Service for Non Smart) for linked export MPANs where there are different import/export Suppliers.

Related MPANs

- The BAU MHHS Design (as explained on the previous slides) is utilised to support the migration of Related MPANs.
- For example:
 - The migration of a Related MPAN group will be initiated by a Supplier sending an IF-031 for the Primary MPAN only.
 - When the migration of the Primary MPAN successfully completes (denoted by the sending of an IF-36) the Registration Service will also send an IF-036 for the Secondary MPANs.
 - Like the BAU MHHS Design this will occur for the appointment of Advanced Metering Services, Advanced Data Services and Smart Metering Services. Smart Data Services will be migrated via a separate IF-031 sent to the Secondary MPAN as per the BAU MHHS Design.

Import / Export

- The BAU MHHS Design (as explained on the previous slides) will not be utilised to support the migration of Import / Export MPANs.
- For example:
 - The BAU MHHS Design rules for Import / Export (e.g. that Advanced Metering/Data Services and Smart Metering Services) will not become effective until all MPANs within an Import/Export group have been migrated to the MHHS arrangements.
 - Import / Export MPANs will be migrated via the sending of separate IF-31s.
 - Once all MPANs in a group have migrated the Registration Service will then begin to apply the BAU rules, which could result in the Registration Service automatically aligning the appointments.
 - Suppliers will continue to have code obligations which require the same organisations to be appointed. However when MPANs exist in both MHHS and Legacy arrangements this could be the same organisation operating MHHS and Legacy roles (i.e. MEM and MS).